

JAY•LOR[®]

Cutter • Mixer • Feeder

09 – HYDRAULICS

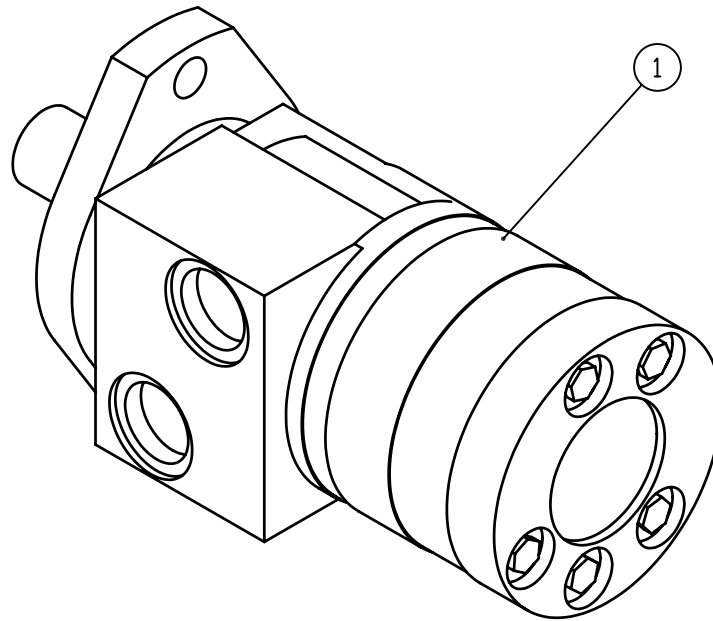
“Putting the ‘Total’ into TMR”

JAY-LOR[®] Fabricating Inc.
RR # 2 Orton, Ontario, Canada, L0N 1N0 Tel: (519) 787-8058 Fax: (519) 787-7053

To Print this Section, Click Here

② * NOTE:

- MACHINE SERIAL NUMBER REQUIRED TO ORDER CORRECT SEAL KIT FOR HYDRAULIC ORBIT MOTOR.



① - DENOTES INDIVIDUAL PART
 ② - DENOTES ASSEMBLY/SUB-ASSEMBLY

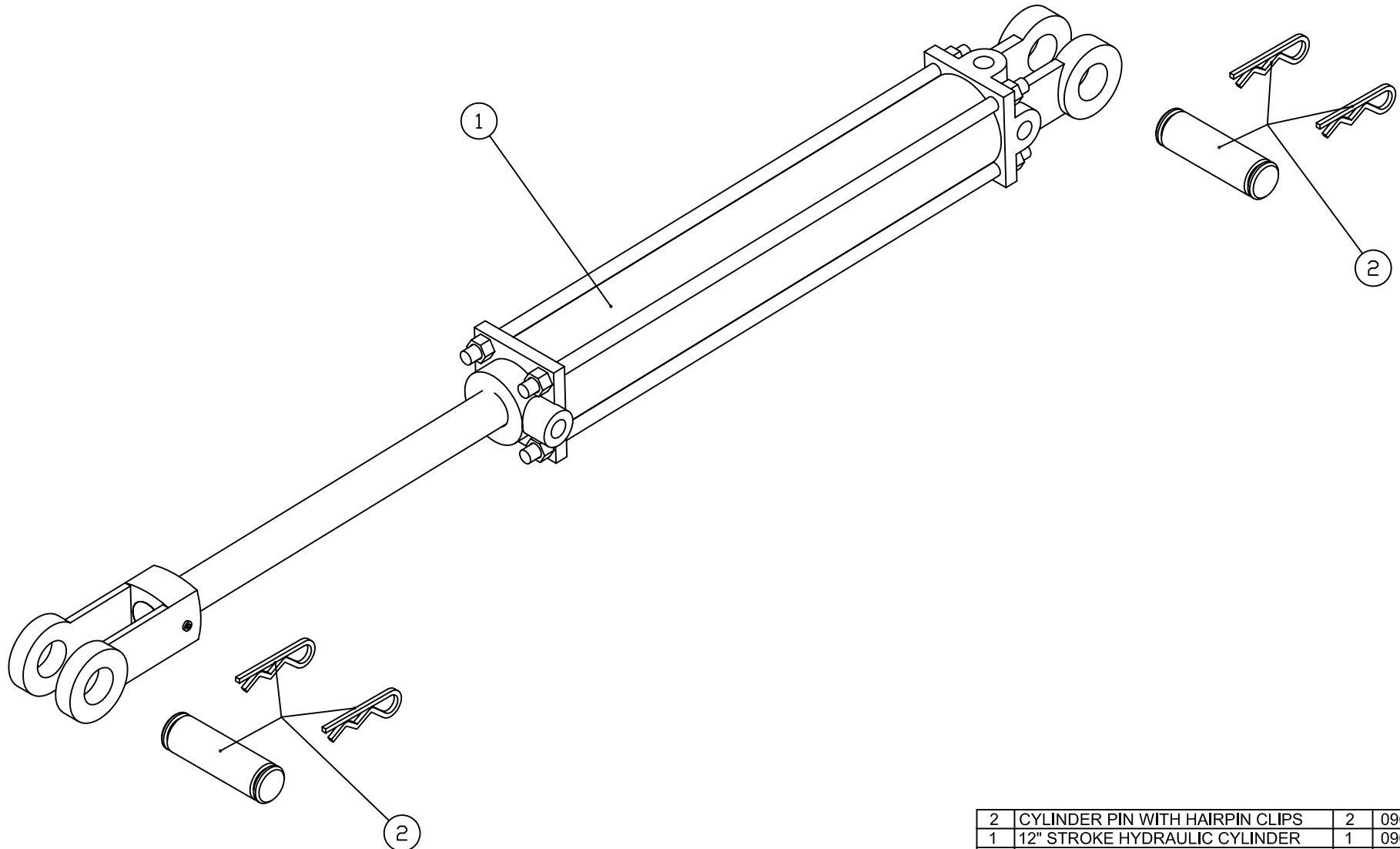
2	SEAL KIT - INC'L SHAFT SEAL & O-RING	1	VARIES
1	HYDRAULIC ORBIT MOTOR (M + S)	1	090-00-51
NO.	PART DESC.	QTY	PART NO.

PARTS LIST

MODEL: ALL APPLICABLE	
DATE: MAR 19/04	SHEET 1 of 1
PART/ASSEMBLY NO: 090-00-51	



TITLE: CONVEYOR DRIVE HYDRAULIC COMPONENTS - REPLACEMENT PARTS



⊖ - DENOTES INDIVIDUAL PART
 ⊕ - DENOTES ASSEMBLY/SUB-ASSEMBLY

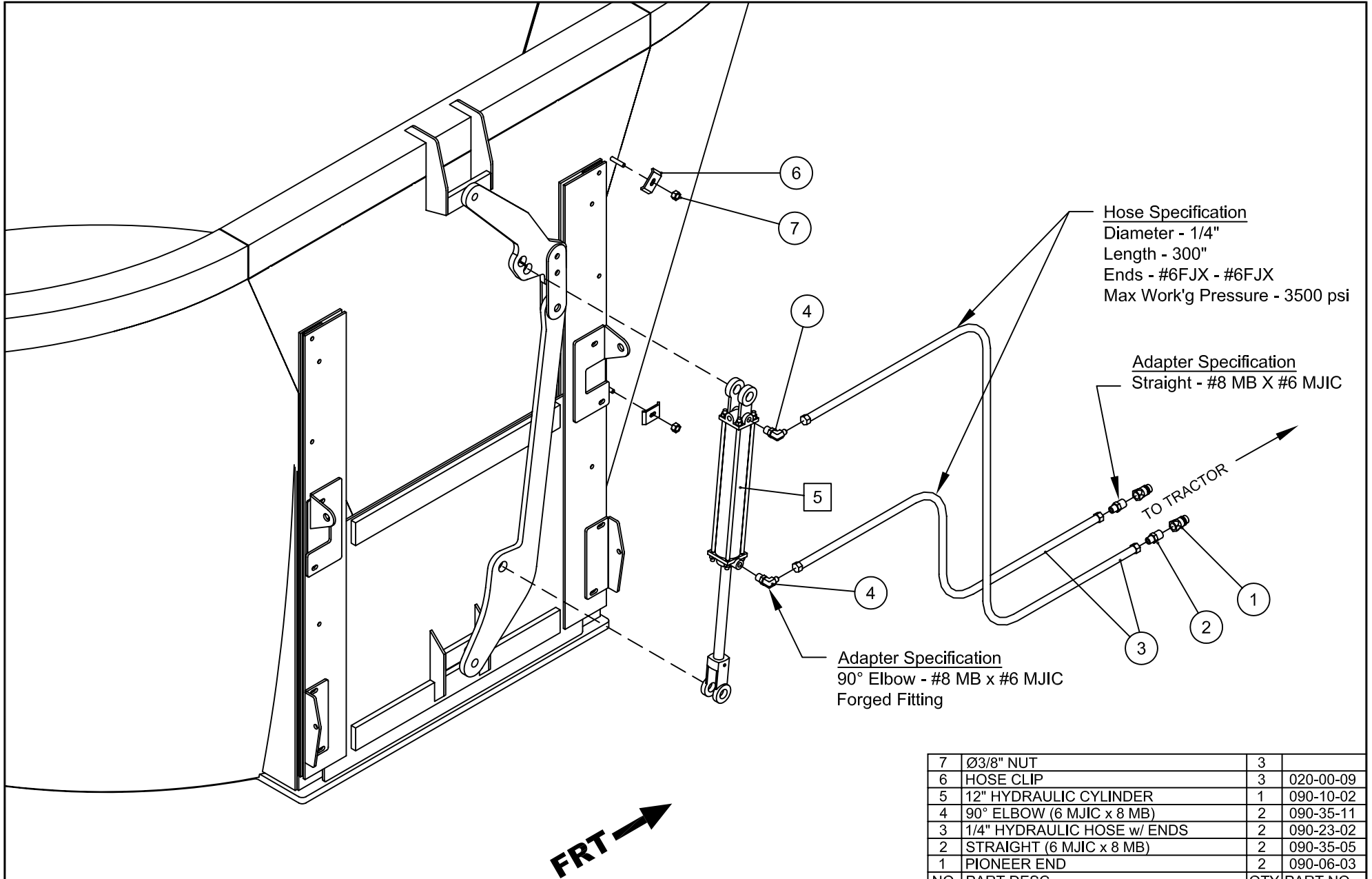
2	CYLINDER PIN WITH HAIRPIN CLIPS	2	090-00-85
1	12" STROKE HYDRAULIC CYLINDER	1	090-10-01
NO.	PART DESC.	QTY	PART NO.

PARTS LIST

MODEL: ALL APPLICABLE	
DATE: JULY 18, 2003	SHEET 1 of 1
PART/ASSEMBLY NO: 090-10-02	



TITLE: 12" STROKE HYDRAULIC CYLINDER FOR DOOR LINKAGE ARMS AND CONVEYOR WING LIFT



⊖ - DENOTES INDIVIDUAL PART
 ⊞ - DENOTES ASSEMBLY/SUB-ASSEMBLY

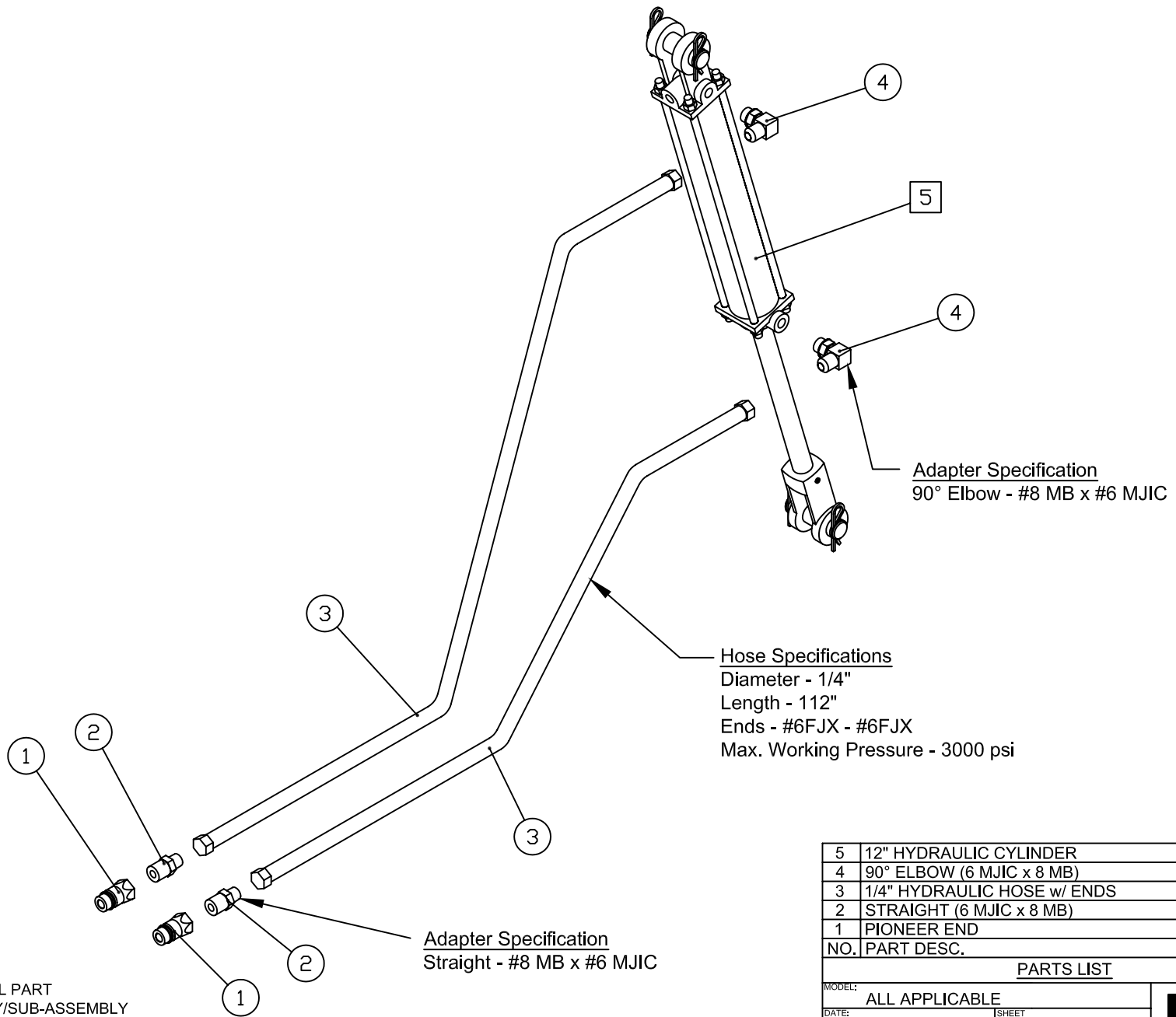
7	Ø3/8" NUT	3	
6	HOSE CLIP	3	020-00-09
5	12" HYDRAULIC CYLINDER	1	090-10-02
4	90° ELBOW (6 MJIC x 8 MB)	2	090-35-11
3	1/4" HYDRAULIC HOSE w/ ENDS	2	090-23-02
2	STRAIGHT (6 MJIC x 8 MB)	2	090-35-05
1	PIONEER END	2	090-06-03
NO.	PART DESC.	QTY	PART NO.

PARTS LIST

MODEL: ALL APPLICABLE
 DATE: AUG 1, 2003 SHEET 1 of 1
 PART/ASSEMBLY NO: 090-23-00



TITLE: 3000 SERIES HYDRAULIC HOSE AND FITTING KIT FOR CENTER-SIDE DISCHARGE DOOR W/ CYLINDER



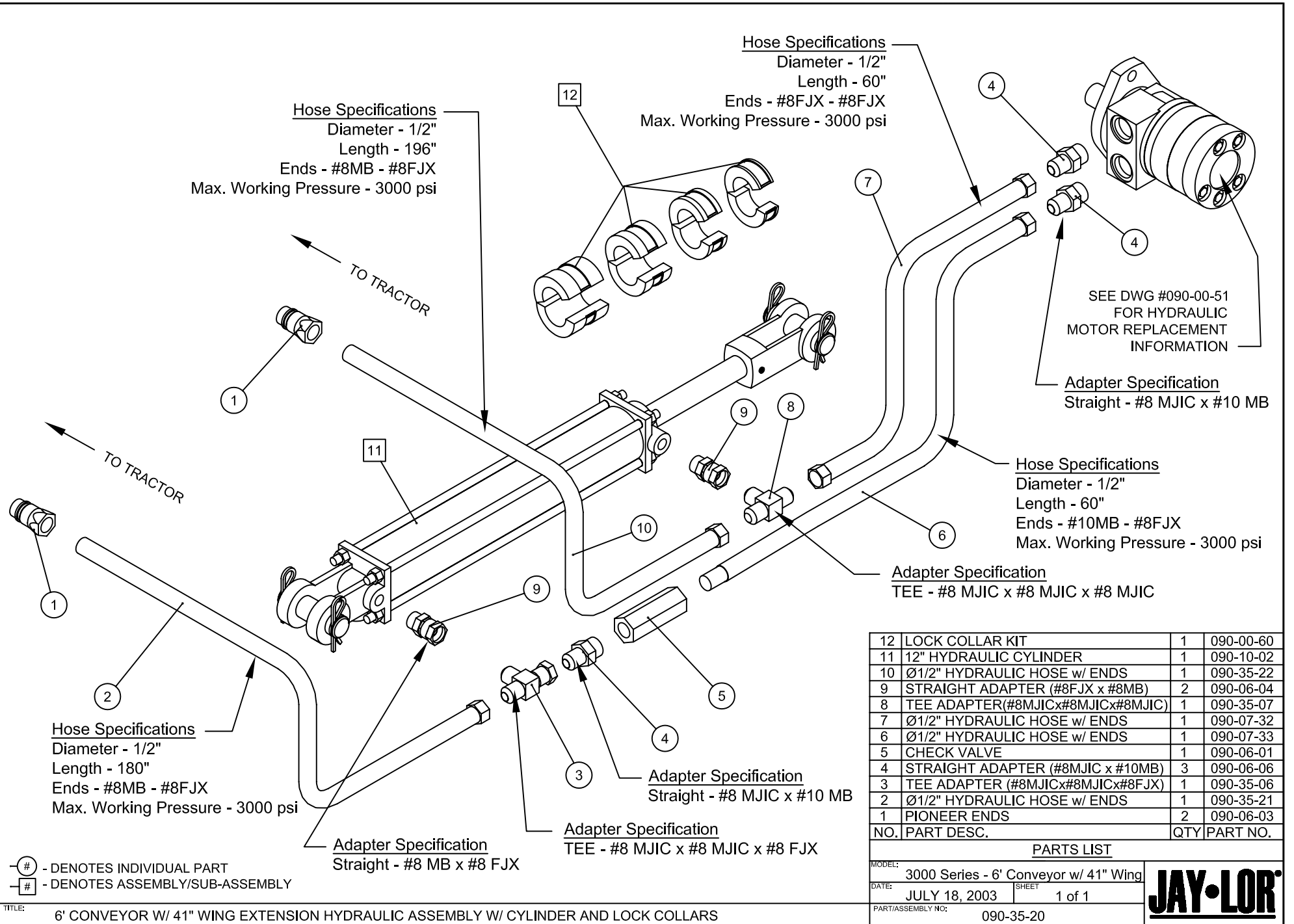
⊖ - DENOTES INDIVIDUAL PART
 ⊞ - DENOTES ASSEMBLY/SUB-ASSEMBLY

NO.	PART DESC.	QTY	PART NO.
5	12" HYDRAULIC CYLINDER	1	090-10-02
4	90° ELBOW (6 MJIC x 8 MB)	2	090-35-09
3	1/4" HYDRAULIC HOSE w/ ENDS	2	090-35-03
2	STRAIGHT (6 MJIC x 8 MB)	2	090-35-05
1	PIONEER END	2	090-06-03

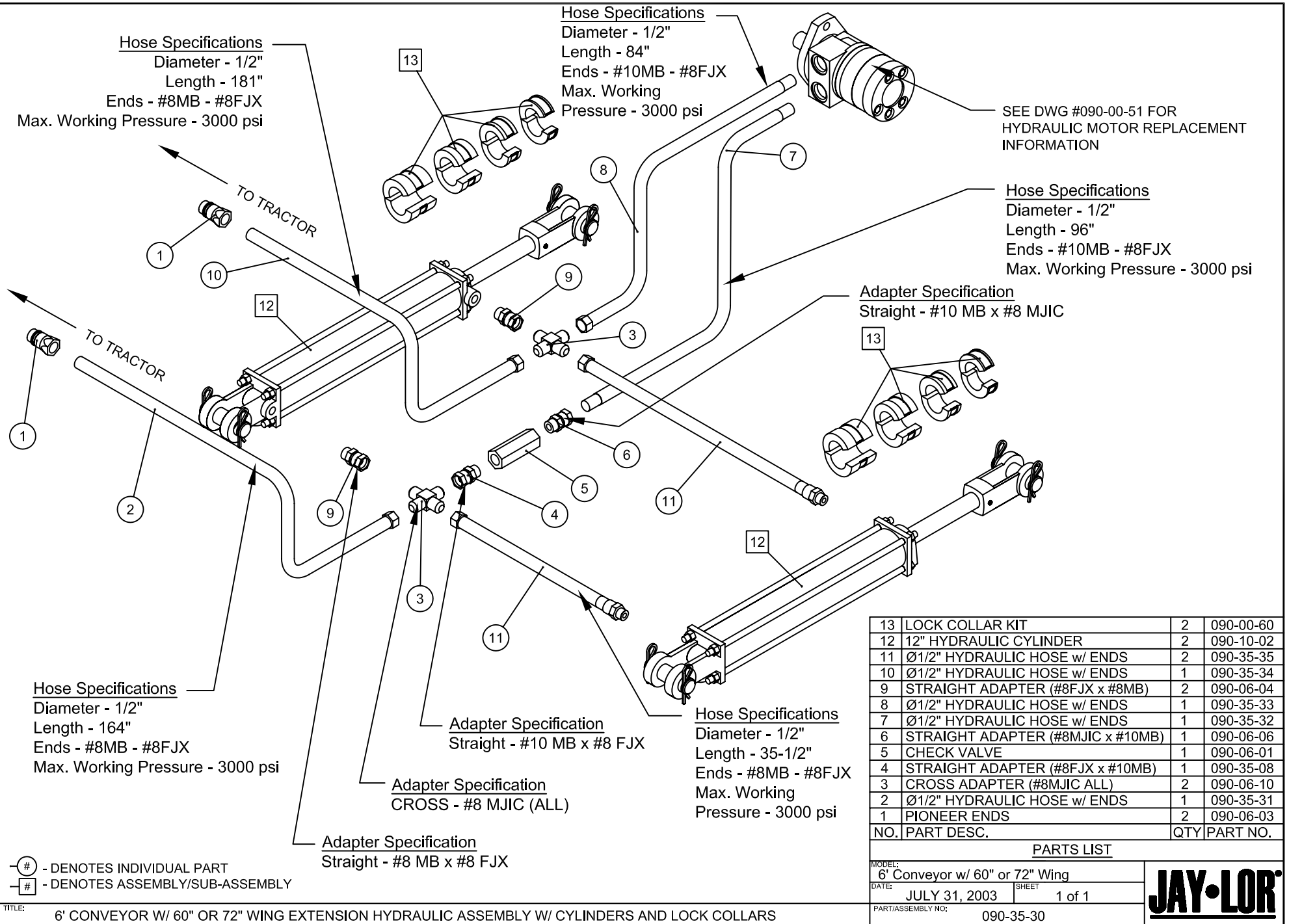
PARTS LIST	
MODEL:	ALL APPLICABLE
DATE:	JULY 18, 2003
SHEET:	1 of 1
PART/ASSEMBLY NO:	090-35-01

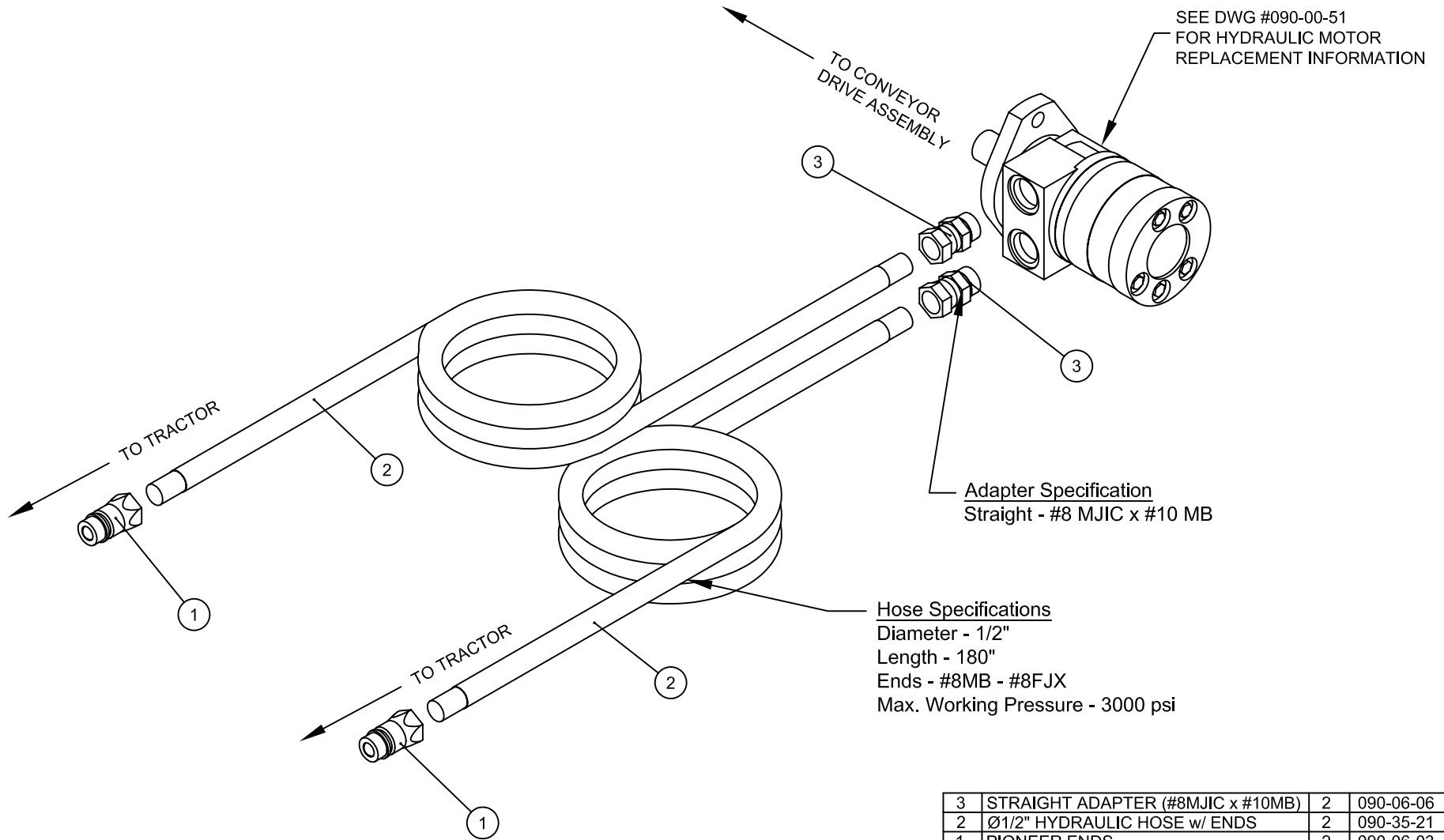


TITLE: HYDRAULIC HOSE AND FITTING KIT FOR FRONT DOOR LINKAGE CYLINDER



TITLE: 6' CONVEYOR W/ 41" WING EXTENSION HYDRAULIC ASSEMBLY W/ CYLINDER AND LOCK COLLARS





3	STRAIGHT ADAPTER (#8MJIC x #10MB)	2	090-06-06
2	Ø1/2" HYDRAULIC HOSE w/ ENDS	2	090-35-21
1	PIONEER ENDS	2	090-06-03
NO.	PART DESC.	QTY	PART NO.

PARTS LIST

MODEL: 3000 Series - Dual Conveyor	
DATE: AUG. 11, 2003	SHEET 1 of 1
PART/ASSEMBLY NO: 090-35-40	



⊖# - DENOTES INDIVIDUAL PART
⊖# - DENOTES ASSEMBLY/SUB-ASSEMBLY

TITLE: HYDRAULIC ASSEMBLY FOR 8'9/2" DUAL CONVEYORS